



VOLUME 1: SETUP
1 UDGAVE: INSTALLATION

VOLYM 1: INSTALLATION
BIND 1: INSTALLASJON

OSA 1: ASENNUS

Xbox 360



- 1 English
- 22 Dansk
- 43 Svenska
- 64 Norsk
- 85 Suomi

English

⚠ WARNING

Failure to properly set up, use, and care for the Xbox 360 video game system can increase the risk of serious injury or death, or damage to the Xbox 360 video game system. Read this manual and the manuals of any peripherals for important safety and health information. Keep all manuals for future reference. For replacement manuals, go to www.xbox.com/support or call the Xbox Customer Support number provided on the back cover.

Before allowing children to use the Xbox 360 video game system:

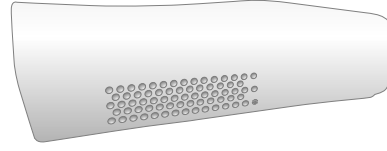
- 1 Determine how each child can use the Xbox 360 console (playing games, connecting to Xbox Live, replacing batteries, making electrical, AV cable, and network connections) and whether they should be supervised during these activities.
- 2 If you allow children to use the Xbox 360 console without supervision, be sure to explain all relevant safety and health information and instructions.



This symbol identifies safety and health messages in this manual and Xbox 360 peripherals manuals.

- 2 Your Xbox 360 Video Game and Entertainment System
- 3 ⚠ Select a Location for the Xbox 360 Console
- 4 Set Up Your Xbox 360 Video Game System
- 5 ⚠ Connect the Console to Power
- 6 ⚠ The Xbox 360 Controller
- 8 Family Settings
- 9 Using the Disc Drive
- 10 ⚠ Important Health Warnings About Playing Video Games
- 11 Play Games
- 11 ⚠ Connect to Xbox Live
- 15 Watch Movies
- 15 Play CDs
- 16 Share Media
- 18 Storage
- 19 Add Wireless Controllers
- 19 Connect Additional Peripherals
- 20 ⚠ Troubleshooting
- 105 Customer Support





system or with most Microsoft Windows XP-

the Ring of Light, which is divided into four

matches your AC power outlet. Plug the

To avoid damaging the power cords and power supply:

- Do not use power cords in areas where they are exposed to heat, moisture, or other hazards.

equipped with an Xbox Guide button. Press

Xbox 360 video game and entertainment

console Power button are both surrounded by

the Xbox 360 console until it clicks.

- 1 Fully insert the power supply cord into the power supply port (included with your console) that is located on the back of the console.

2 Select one of the two AC power cords

- 3 Plug the other end of the AC power

video game and entertainment system are

Always connect the power cords according to

of time.

THE XBOX 360 CONTROLLER

The Xbox 360 Controller is for use with the

Ring of Light

The controller Xbox Guide button and the

cord into the wall outlet.

The Xbox Guide Button

All controllers and remotes for your Xbox 360



The Inline Release

Your controller cord has an inline release. This is a safety feature designed to reduce the chance of the Xbox 360 console or computer falling when the cord is pulled. If the console or computer falls and hits someone, especially a small child, it could cause serious injury. To reduce the risk of injuries or damage to the console or computer, it is important to use the controller and the inline release properly. Use the controller connector, not the inline release, to routinely connect and disconnect the controller. If an inline release disconnects, simply reconnect it by aligning the grooved indentations and pressing the two parts completely together. The controller will not work unless the inline release is connected properly.

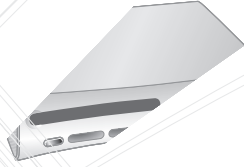


WARNING

Never tape, glue, or otherwise prevent an inline release from pulling apart.

The inline release reduces, but does not eliminate, the risk of the computer or console being pulled off its surface. To further reduce the risk:

- Do not allow anyone to pull on the controller or controller cord in a way that causes the computer or console to move.
- Do not allow controller cords to become crossed or tangled with one another.





PLAY GAMES

The Xbox 360 video game and entertainment system can only play game discs licensed by Microsoft for the Xbox 360 video game and entertainment system. Licensed games bear this logo:

To start a game:

- 1** Press the Eject button to open the disc tray.
- 2** Place the Xbox 360 game disc on the disc tray with the label facing out.
- 3** Press the Eject button to close the disc tray. The game will start.

For the latest information about Xbox 360 games, go to www.xbox.com.

CONNECT TO XBOX LIVE

You can instantly become an Xbox Live Silver member by simply connecting an Ethernet cable into the Ethernet port in the back of the console. You can create gamertags, access the Xbox Live Marketplace, view gamer cards, participate in chats, get voice messages, make friends, and use Xbox Live Family Settings. Xbox Live Silver members get limited-time gameplay through special events like free Xbox Live Gold weekend play, Xbox Live Game with Fame and Xbox Live Prime Time.

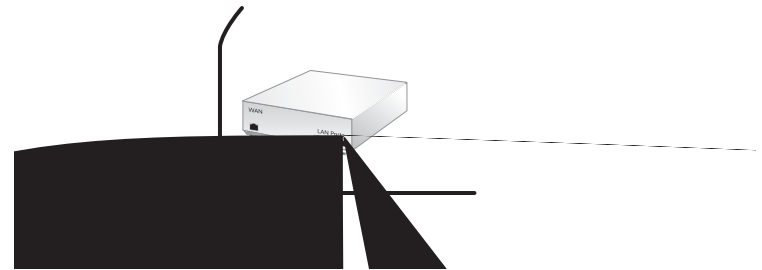
If you're ready for the full Xbox Live experience, sign up for an Xbox Live Gold membership. Xbox Live Gold gives you all the features of Xbox Live Silver, and online multiplayer gaming, enhanced matchmaking and feedback tools, privileges and rewards on Xbox Live Marketplace, and media features such as music and photo sharing.

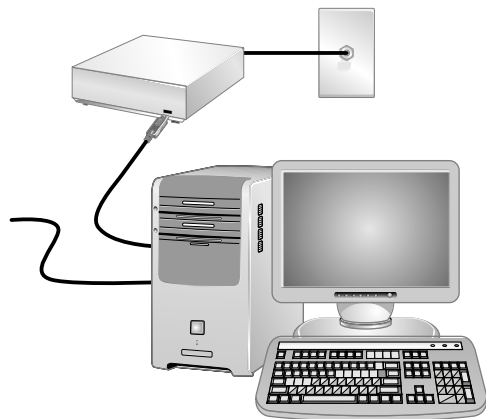
Set Up Your Connection

Set up your Xbox Live connection using a direct connection, a router connection, or Microsoft Windows Internet Connection Sharing (ICS). You can also set up a wireless home network connection using the Xbox 360 Wireless Networking Adapter (sold separately). For more information about setting up your connection and further home networking options, go to www.xbox.com/live.

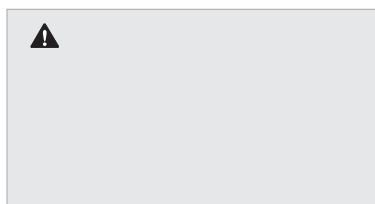
NOTE

You must have a high-speed (cable or DSL) Internet connection to play on Xbox Live. You must also have a hard drive (sold separately if your console did not come with one) or memory unit (sold separately) to store game data and screenshots.





COMPACT
disc
DIGITAL AUDIO



DVD
R

SHARE MEDIA

You can use your Xbox 360 console to play music, view pictures, and access other media files from other devices. You can connect USB devices such as music players and digital cameras to the Xbox 360 console USB ports. You can also connect your Xbox 360 console to a Microsoft Windows PC through an Ethernet cable or other home network configuration.

For a list of third-party devices supported by your Xbox 360 video game and entertainment system go to www.xbox.com/media.

Stream Music to Your Console

To stream music from a personal audio player to your Xbox 360 console:

- 1 Connect a USB cable (not provided) between the device and your Xbox 360 console.
- 2 Configure the device to play through the USB port.

- 3 In the Xbox Dashboard, select **Media, Music, Connected Devices**.

- 4 Select the music or playlist you want to listen to.

See Your Pictures

You can create slideshows and view pictures stored on your digital camera.

To connect your digital camera:

- 1 Setup your digital camera for viewing pictures. See your camera instructions for details on how to view pictures.
- 2 With your Xbox 360 console turned on, connect your camera to a USB port on the Xbox 360 console with a USB cable.
- 3 The Xbox 360 console will detect your digital camera. Follow the instructions onscreen to access pictures.

www.xbox.com/setup.

Windows Media Connect lets you connect your Xbox 360 console to a PC with Microsoft Windows XP Service Pack 2 (SP2), while Windows Media Center lets you connect your Xbox 360 console to a Windows Media Center-based PC.

Along with normal DVD remote control functions, the Xbox 360 Universal Remote (sold separately) has a Windows Media Center button that lets you access a connected Windows Media Center-based PC.

Windows Media Connect

Windows Media Connect enables your Xbox 360 console to stream music and pictures stored on your Windows XP-based computer anywhere in your home. View slide shows on your TV, and create playlists to play all your music through the same sound system connected to your Xbox 360 console through a digital audio receiver. To learn more about Windows Media Connect, go to www.xbox.com/media.

To setup Windows Media Connect:

- 1 Go to www.xbox.com/pcsetup and download the Windows Media Connect software to your PC that is running an up-to-date version of Windows XP SP2.
- 2 Connect your Xbox 360 console to your PC using one of the networks described earlier in this manual in "Connect to Xbox Live."

- 3 On your Xbox 360 console, go to **Media**, and select pictures or music from a Windows PC. Follow the instructions on the screen to complete the Windows Media Connect set-up.

Windows Media Center

Windows Media Center technology in your Xbox 360 console delivers Microsoft Windows Media Center experiences—including watching or recording TV shows, viewing your digital photos, and listening to your digital music library—from your Windows Media Center-based PC to any TV in your home. When you connect your Xbox 360 console to the same network as your Windows Media Center-based PC, Media Center delivers the Media Center experiences to your Xbox 360 video game and entertainment system.

To learn more about Windows Media Center for Xbox 360, go to www.microsoft.com/extender.

To set up Windows Media Center:

- 1 Go to www.xbox.com/pcsetup and download the latest Windows Media Center software update to your Windows Media Center-based PC.
- 2 Connect your Xbox 360 console to your Windows Media Center-based PC using one of the networks described earlier in this manual in "Connect to Xbox Live."
- 3 On your Xbox 360 console, go to **Media**, and select **Media Center**. Follow the instructions on the screen to finish the Windows Media Center set-up.

STORAGE

If you are going to connect to Xbox Live you will need a place to store your profile information, game information, and all of the great content available on Xbox Live. The Xbox 360 video game and entertainment system has two data storage options, the Xbox 360 Hard Drive for all of your storage needs and the Xbox 360 Memory Unit for portable storage.

Removable Hard Drive

You can add an Xbox 360 Hard Drive (sold separately) to your Xbox 360 console for additional storage. The Xbox 360 Hard Drive provides extensive storage for downloadable game content, saved games, gamer profiles, and Xbox Live membership information. A hard drive is required to play original Xbox games on your Xbox 360 console.

Memory Units

You can also connect up to two portable memory units (sold separately) to the memory unit ports on the front of the Xbox 360 console for additional storage. Memory units are smaller than your hard drive, but are designed to be portable so you can take your Xbox Live profile or saved games to other Xbox 360 consoles. You can also take your memory unit to participating retailers and download content from their Xbox 360 Demo Kiosks.



ADD WIRELESS CONTROLLERS

Your Xbox 360 console comes ready to use with up to four Xbox 360 wireless controllers (sold separately) or a combination of four controllers, wired and wireless. To add a wireless controller to your console, see the Xbox 360 Wireless Controller instructions.

CONNECT ADDITIONAL PERIPHERALS

The Xbox 360 system is designed to work with a variety of external devices, including:

- Up to four wireless controllers and other gameplay peripherals, including the Xbox 360 Wireless Controller (sold separately).
- AV connectors such as component video cables and digital audio cables, including the Xbox 360 Component HD AV Cable, the Xbox 360 Advanced SCART AV Cable, and the Xbox 360 VGA HD AV Cable (sold separately).
- Ethernet and wireless home networking devices such as the Xbox 360 Wireless Networking Adapter (sold separately).
- Storage devices such as the Xbox 360 Hard Drive (sold separately), Xbox 360 Memory Units (sold separately), and USB-based storage devices.
- USB-based media devices such as music players and digital cameras.
- Custom Xbox 360 Faceplates.

Look for the Xbox Authentic Product logo for peripherals from Microsoft for use with your Xbox 360 system:



For devices from other manufacturers, look for one of the following logos, which means the device has been tested to meet stringent compatibility requirements to work with Xbox 360 or Xbox Live. For more information about compatible devices, go to www.xbox.com.



TROUBLESHOOTING

Follow these steps to troubleshoot difficulties with the Xbox 360 video game and entertainment system. If the steps in this troubleshooting section do not solve your problem, contact Xbox Customer Support. Go to www.xbox.com/support or call the Xbox Customer Support number provided on the back cover. Do not take your Xbox 360 console or its peripherals to your retailer for repair or service unless instructed to do so by an Xbox Customer Support representative.

Do Not Attempt Repairs

Do not attempt to take apart, open, service, or modify the Xbox 360 console, power supply or peripherals. Doing so could present the risk of electric shock, fire or damage to your Xbox 360 console. Any evidence of any attempt to open and/or modify the Xbox 360 console, including any peeling, puncturing, or removal of any of the labels, will void the Limited Warranty and render the Xbox 360 console ineligible for authorized repair.

No Power

Confirm that you have an appropriate power source and check all connections between wall outlet and power supply, and power supply and console (see "Connect the Console to Power"). The power supply light should glow green when it is working properly.

No Picture

Connect the appropriate AV cable. Turn on the TV. Select the video input on the TV (or VCR, if connected to a VCR) that displays the Xbox 360 game. Common names for video input include Input Select, AUX, Line In, Line, In, Input, Source, and EXT, depending on your TV or VCR type. For more information, see your TV or VCR manual.

No Sound

Check the AV connection. If you're using digital audio, make sure the receiver is turned on and the output in your Xbox 360 console's audio settings is set correctly.

Poor Quality Sound

Clean the disc as shown in "Care and Cleaning" in the Xbox 360 Warranty manual (Volume 2). Check the AV connection. Play Dolby® Digital audio only on audio systems that support Dolby Digital. Select the audio output that is supported by your system or TV: stereo or Dolby Surround for stereo speakers, mono for monaural speakers. If sound is coming from only one speaker, check that all audio cables are connected correctly.

Disc Tray Does Not Open

Make sure the removable faceplate on the front of the console is fully connected and properly aligned. Check the connection to power (see "Connect the Console to Power"). Turn on the Xbox 360 console by pressing the Power button.

Game, Movie or Music Does Not Start

Only play supported discs (Xbox 360 games, audio CDs, DVD movies). Insert the disc with the label up and close the disc tray. Clean the disc as shown in "Care and Cleaning" in the Xbox 360 Warranty manual (Volume 2).

Ring of Light Flashes

The lights in the console Ring of Light should glow solid while the Xbox 360 video game and entertainment system is on and flash when you press the Eject button. If the Ring of Light flashes differently during operation, the Xbox 360 video game and entertainment system has an internal problem:

- Four lights on console flash red: Check your AV cable.
- Two left lights on console flash red: The Xbox 360 console is too hot and will not play games until cooled down. Place the Xbox 360 console in a well-ventilated area away from other heat sources. Once the console cools, the flashing will stop and the Xbox 360 video game and entertainment system can be played. For more information, see "Select a Location for the Xbox 360 Console."
- Four lights on controller periodically flash green: No Ring of Light quadrant assignment. The controller is not connected or all four quadrants are full.
- All other patterns: Internal problem requires service. Contact Xbox Customer Support.

Peripheral Does Not Work

Use Xbox 360-compatible peripherals that have this logo:



If a peripheral is not supported by a specific game, the game may not play.

Cannot Save Game

The Xbox 360 Hard Drive or Memory Unit must have enough free space to save the game. Delete unwanted items from storage or attach an additional memory unit (sold separately) for more space.

© 2005 Microsoft Corporation. All rights reserved.

Microsoft, Windows, Xbox, Xbox 360, Xbox Live, the Xbox logos, and the Xbox Live logo are either registered trademarks or trademarks of Microsoft Corporation in the United States and/or other countries.

Customer Support

Go to **www.xbox.com/support** or call Xbox Customer Support:

- United Kingdom: 0800-587-1102 (TTY users: 0800-587-1103)
- Ireland: 1-800-509-186 (TTY users: 1-800-509-197)

Kundesupport

Gå til **www.xbox.com/support**, eller ring til Xbox kundesupport:

- Danmark: 80-88-40-97 (TTY-brugere: 80-88-40-98)

Kundsupport

Gå till **www.xbox.com/support** eller ring kundsupporten för Xbox:

- Sverige: 020-79 11 33 (texttelefon: 020-79-1134)

Kundestøtte

Gå til **www.xbox.com/support** eller ring Xbox kundestøtte på følgende numre:

- Norge: 800-14174 (TTY-brukere: 800-14175)

Asiakastuki

Saat lisätietoja osoitteesta **www.xbox.com/support** tai soittamalla Xbox -asiakastuen numeroon:

- Suomi: 0800-1-19424 (TTY-käyttäjät: 0800-1-19425)

Microsoft®



XBOX®



Register Your **Xbox** 360 Console Online Today

It only takes a few minutes to join the Xbox community and gain access to exclusive information, rewards and offers.

Go to www.xbox.com/registermyxbox

Registrer **Xbox** 360 online i dag

Det tager kun et par minutter at tilmelde sig Xbox-fællesskabet og få adgang til eksklusive oplysninger, priser og tilbud.

Gå til www.xbox.com/registermyxbox

Registrera din **Xbox** 360 online idag

Det tar bara några minuter att bli en del av Xbox-communityn och få tillgång till exklusiv information, priser och erbjudanden.

Gå till www.xbox.com/registermyxbox

Registrer din **Xbox** 360 via Internett i dag

Det tar bare noen minutter å bli medlem av Xbox-fellesskapet og få tilgang til eksklusiv informasjon, premier og tilbud.

Gå til www.xbox.com/registermyxbox

Rekisteröi **Xbox** 360 -konsolisi online-palvelussa tänään

Xbox-yhteisöön liittyminen kestää vain muutaman minuutin. Tämän jälkeen saat käyttöikeuden yksityisiin tietoihin, palkintoihin ja tarjouksiin.

Saat lisätietoja osoitteesta www.xbox.com/registermyxbox