

---

---

**ENGLISH**

## Xbox HDMI AV Cable

Thanks for choosing the Xbox 360 HDMI AV Cable to connect your Xbox 360 console to high definition TVs that incorporate HDMI (High-Definition Multimedia Interface) technology. You can also use the included audio adapter cable and a stereo or digital audio cable (sold separately) to connect to stereo or digital audio input for amplifiers or receivers. These cables are for use exclusively with the Xbox 360™ video game and entertainment system.

The limited warranty covering this product is contained in the Xbox 360 Warranty manual (Volume 2) and is available online at [www.xbox.com/support](http://www.xbox.com/support).



### **WARNING**

Before using this product, read this manual and the Xbox 360 console manuals for important safety and health information. Keep all manuals for future reference. For replacement manuals, go to [www.xbox.com/support](http://www.xbox.com/support) or call Xbox Customer Support (see “If You Need More Help”).



## CONNECT YOUR COMPONENT HD AV CABLE

Use your HDMI AV cable to connect your console to a TV that supports HDMI.

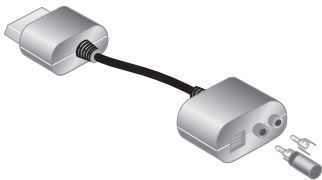
### IMPORTANT

Stationary images in video games can “burn” into some TV screens, creating a permanent shadow. Consult your TV owner’s manual or manufacturer before playing games.

### Connect to a High Definition TV

*To connect to an HDMI port on your high definition TV:*

- 1 Turn off your console.
- 2 If another AV cable (such as the cable that came with your console) is already connected to the AV port on your console, disconnect it before continuing.
- 3 Connect the HDMI AV cable connector to the HDMI AV port (not the standard AV port) on the console.
- 4 Connect the other end of the HDMI AV cable to the HDMI input on your TV.
- 5 Turn on your console. From the System area, select the appropriate high definition video setting for your TV.



### Connect to a Stereo Audio System

HDMI supports audio through your TV. However, you might prefer to connect Xbox 360 audio to a different audio system, such as a stereo receiver or amplifier. To do so, connect the HDMI AV cable for video and the included audio adapter cable for audio.

*To connect to a stereo audio system:*

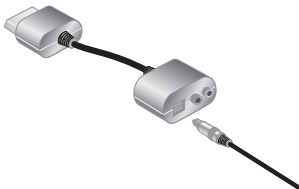
- 1 Connect the HDMI AV cable as described in “Connect to a High Definition TV.”
- 2 Connect the audio adapter cable connector to the AV port (not the HDMI AV port) on your console.

Leave the HDMI AV cable connected to your TV for video.

- 3 Connect a standard stereo audio extension cable (sold separately) to the solid colour left and right (white and red) audio connectors on the audio adapter cable. Connect the other end of the extension cable to the audio inputs on your stereo audio system.

#### **NOTE**

For monaural (mono) systems, which have only one audio jack, connect either the right or left audio connector to the audio jack.



### Connect to a Digital Audio System

If your system (typically, a receiver or amplifier) has digital audio input, you can connect to digital audio rather than to the standard left and right audio inputs. Digital audio input should produce higher-quality sound than standard left and right stereo audio.

*To connect to digital audio:*

- 1 Connect the HDMI AV cable as described in “Connect to a High Definition TV.”
- 2 Connect the audio adapter cable connector to the AV port (not the HDMI AV port) on your console. Leave the HDMI AV cable connected to your TV for video.
- 3 Connect your digital audio cable (not included) to the digital audio output on the audio adapter cable. Connect the other end of your digital audio cable to the digital audio input on your receiver.
- 4 Turn on your console. From the System area, you can change your audio and digital output settings. Select the appropriate digital audio setting for your system.

---

---

## TROUBLESHOOTING

---

If you encounter problems, try the possible solutions indicated below.

### **Picture or Sound Issues**

Don't connect both the HDMI AV cable using the HDMI port and an AV cable using the AV port, such as the Xbox 360 Component HD AV Cable (sold separately). Connect only the optional audio adapter cable (included) for audio output while the HDMI AV Cable is connected.

### **No Picture**

Turn on the TV. Select the video input on the TV (or VCR, if connected to a VCR) that displays the Xbox 360 game. Common names for video input include Input Select, AUX, Line In, Line, In, Input, Source, and EXT, depending on your TV or VCR type. For further information, see your TV or VCR manual.

### **Picture with No Sound**

If you are setting up HDTV for the first time, verify that your TV

supports the HDTV settings in the Xbox Dashboard. If you're using standard left and right audio, make sure the audio connectors are connected to the appropriate input group on your amplifier or receiver. If you're using digital audio, make sure your audio receiver is turned on and the audio output is correctly set in the Xbox Dashboard.

### **Sound with No Picture**

Verify that the TV is turned on. If you're using standard left and right audio, make sure the audio connectors are connected to the appropriate input group on your amplifier or receiver. Make sure the TV has been set to display the input group into which the HDMI AV cable is connected.

### **No High Definition Output**

Make sure that the HDTV settings in the Xbox Dashboard are supported by your TV.

---

---

## IF YOU NEED MORE HELP

Please go to [www.xbox.com/support](http://www.xbox.com/support) or call Xbox Customer Support:

- Ireland: 1-800-509-186  
TTY users: 1-800-509-197
- United Kingdom: 0800-587-1102  
TTY users: 0800-587-1103
- South Africa: 0800-99-1550

Do not take your Xbox 360 console or its accessories to your retailer for repair or service unless instructed to do so by an Xbox Customer Support representative.

### Do Not Attempt Repairs

Do not attempt to take apart, service, or modify the Xbox 360 console, power supply, or its accessories in any way. Doing so could present the risk of serious injury or death from electric shock or fire, and it will void your warranty.

## DISPOSAL OF WASTE ELECTRICAL AND ELECTRONIC EQUIPMENT (WEEE) IN THE EUROPEAN UNION AND OTHER COUNTRIES WITH SEPARATE COLLECTION SYSTEMS

This symbol on the product or its packaging means that this product must not be disposed of with your household waste. Instead, it is your responsibility to hand this over to an applicable collection point for the recycling of electrical and electronic equipment. This separate collection and recycling will help conserve natural resources and prevent potential negative consequences for human health and the environment, which inappropriate disposal could cause due to the possible presence of hazardous substances in electrical and electronic equipment. For further information about where to drop off your electrical and electronic waste, please contact your local city/municipality office, your household waste disposal service, or the shop where you purchased this



product. Contact  
weee@microsoft.com for  
additional information on  
WEEE.

## COPYRIGHT

Information in this document, including URL and other Internet Web site references, is subject to change without notice. Complying with all applicable copyright laws is the responsibility of the user. Without limiting the rights under copyright, no part of this document may be reproduced, stored in or introduced into a retrieval system, or transmitted in any form or by any means (electronic, mechanical, photocopying, recording, or otherwise), or for any purpose, without the express written permission of Microsoft Corporation.

Microsoft may have patents, patent applications, trademarks, copyrights, or other intellectual property rights covering subject matter in this document. Except as expressly provided in any written licence agreement from Microsoft, the furnishing of this document does not give you any licence to these patents, trademarks, copyrights, or other intellectual property.

© 2006 Microsoft Corporation. All rights reserved. Microsoft, Xbox, Xbox 360, Xbox Live, the Xbox logos and the Xbox Live logo are either registered trademarks or trademarks of Microsoft Corporation in the United States and/or other countries. HDMI, the HDMI logo and High-Definition Multimedia Interface are trademarks or registered trademarks of HDMI Licensing LLC.